

Fig: I.

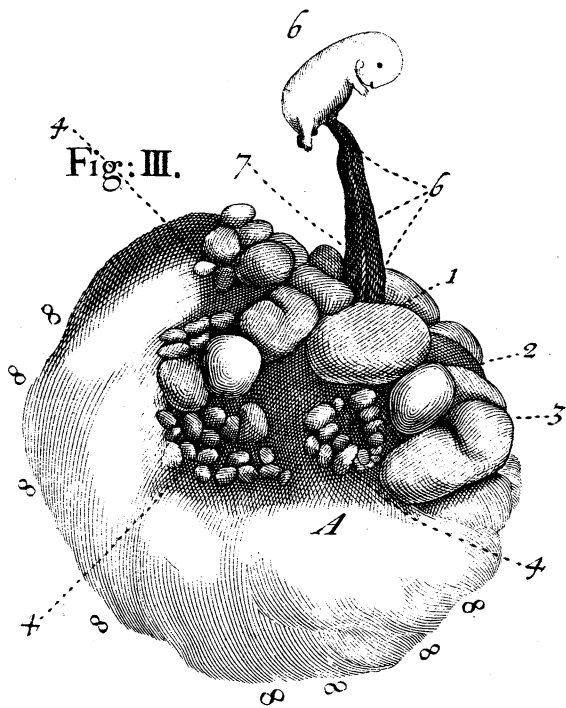
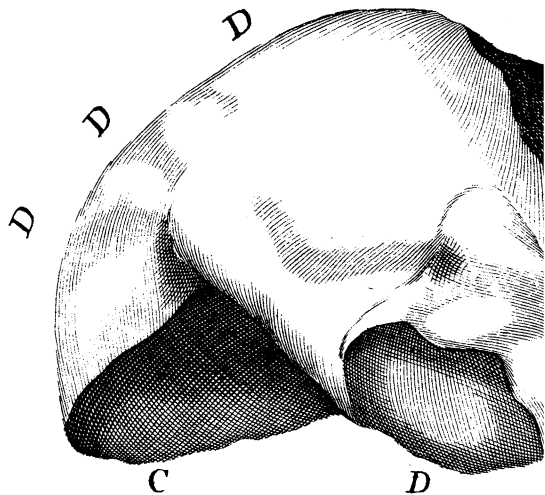


Fig: III.

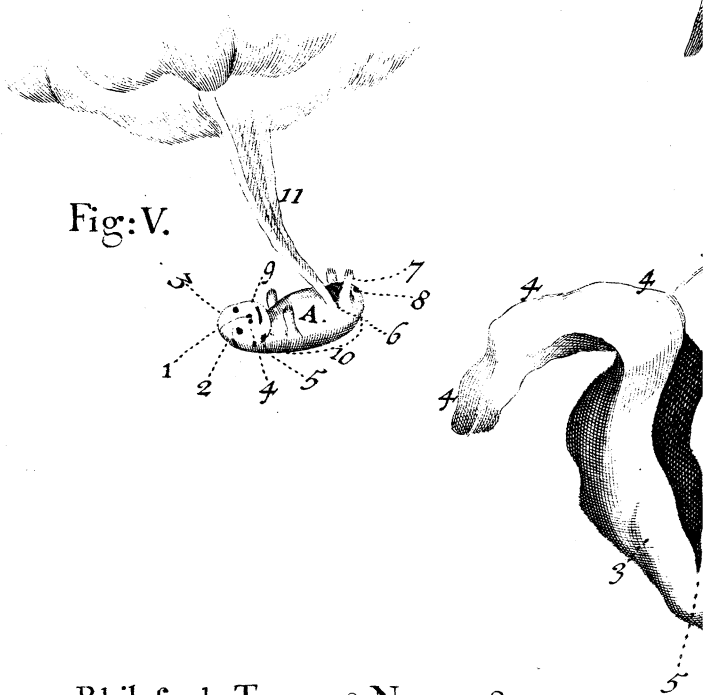
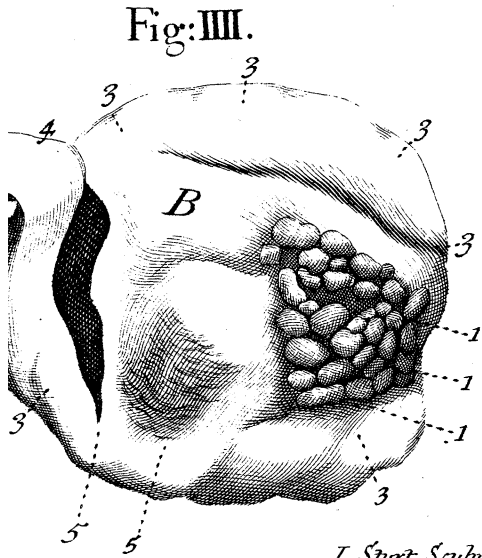
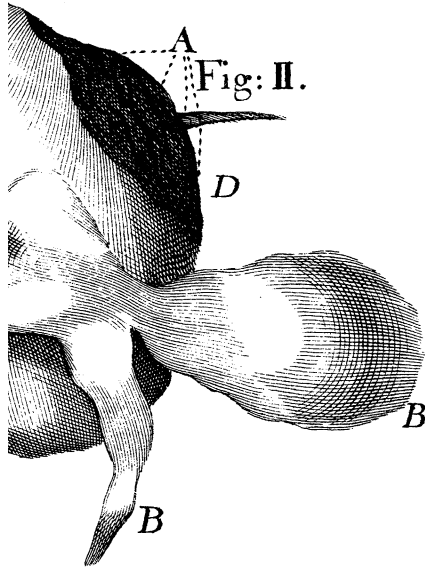


Fig: V.

Philosoph: Transact: No. 238.



*the Royal Society by the Right Honourable Sir Rob Southwell, V.P R.S. VII. An Account of a very large Eel, lately caught at Maldon in Essex; with some Considerations about the Generation of Eels, by Mr. Dale. IX. Account of a Book. The History of Poland in several Letters to Persons of Quality, giving an account of the Ancient and Present State of that Kingdom, Historical, Geographical, Physical, Political and Ecclesiastical, &c. With several Letters relating to Physick. Vol I. To which is added a new Map of Poland. By Bern. Connor, M.D. F.R.S. and Member of the Colledge of Physicians, &c.*

---

- I. *Historia; & explicatio figurarum, Embryon quatuor Septimanarum, & placentam cotiledoniformem exhibentium, Autore Philippo Jacobo Hartmanno, Phil. & Med. D. &c.*

**M**Atroa quadraginta circiter annorum, tertium hunc abortum faciebat, anno 1685. Septemb. 27. ante quatuor Septimanas ipsi menses adhuc fluxerant, tertio autem qui abortum præcessit die linteis lævigandis operam navans, & cylindris ducendis manum admoveat, exin die dicto sanguis grumofus magnâ copâ erumpere, quum alias Uteri hæmorrhagiæ esset obnoxia; successit tandem placenta cum chorio, amnio & fætu formâ ovi integri; quod ovum citra ullam aliorum contractionem ac palpationem domum auferre licuit, ubi otisus omnia rimatus sum.

Figura

Figura I.

*Placentæ structuræ exterioris, quâ Utero adhæsit, partem Colyledoniformem exhibens.*

a a a *Sc.* Magnitudo placentæ, quæ totius Uteri cavitatem implevit.

b b b *Sc.* Pars cotyledoniformis meris glandulis globosis obsita ; glandulæ in medio rubicunda puncta ostendunt vasorum ruptorum ora hiantia : circa puncta sunt foveolæ quasi impressæ, quas & sceleton monstrat : Huic parti colyledoniformi intus oppositæ erant vesiculæ rubicundo & flavo liquore distentæ, quas figura III. exprimit.

c c c Loca in quibus sanguinei ductus insigniter erant conspicui.

Figura II.

*Placentæ Structuræ exterioris, quâ Utero adhæsit, partem alteram exhibens.*

A. Locus ex quo vasa longiora avulsa dependebant ; ubi Placenta Utero firmiter annexa aut agglutinata fuit.

B. B. Lacinie Placentæ gracilescens.

C. Foramen per quod Chorion & amnion prominebant.

D. D. *Sc.* Placentæ globus quem omnes figuræ representant, ut totius Uteri cavitatem à Placenta succinctam fuisse, foetumque in eadem tanquam in altero Utero sive Utriculo contineri constet.

Figura III.

*Placentæ Structuræ interioris pars prior cum Embryo.*

1. Vesicula insignior sanguine rubicundo turgida.
2. Vesicula alia flavo liquore repleta.
3. Vesicula maxima ibidem flavo liquore distenta.
4. 4. 4. 4. Vesiculæ circum sitæ minores, variâ proportionem, varioque liquore, rubicundo, flavo, limpido, plenæ.
5. Umbilicis funiculus cum vasis.
6. Embryon ; figuræ, magnitudinis, manuum & pedum

dum sitûs, penis, podicis caudati, foraminis ani quasi à meconii nigrore punctati, helices auriculæ, rectûs oris, accuratâ omnium delineatione.

7. Locus in quo funiculi tunica vesicularum latebris se infinuabat.

8.8.8. *Sc.* Spatium vesiculis vacuum, chorio & amnio Placentæ crepidinibus annexis.

Figura IV.

*Placentæ Structuræ interioris pars altera sine Embryo.*

1.1.1. Vesicutæ variâ magnitudine, varioque in eis liquorum colore.

2. Vasa sanguinea hinc inde commeantia.

3.3.3. *Sc.* Spatium Vesiculis vacuum, Placentæ expansionem cum annexa Chorii tunica ostendens.

4.4.4. Lacinia Chorii cum Placentæ divulsæ parte graciliori.

5. Foramen à Placentæ & Chorii ruptura.

Figura V.

*Embryon exhibens.*

A. Embryi Corporis habitudo.

1. Linea alba frontem dividens.

2.3. Duæ alix lineæ albæ ad futuram coronalem tendentes.

4. Duo puncta quæ narium foramina designant.

5. Helix auriculæ albicante lineâ discreta.

6. Penis.

7. Pedum digiti inequaliter desinentes, cum exiguis lineis fissurarum indicibus; eadem ratio manuum.

8. Caudæ eminentia cum punctato ani foramine.

9. Oris rictus.

10. Medulla spinalis albicans utrinque à se versus latera exiles lineas albas, æqualiter curtas, dimittens.

11. Umbilicalis funiculus per cujus tunicam exilia vasa transparent.

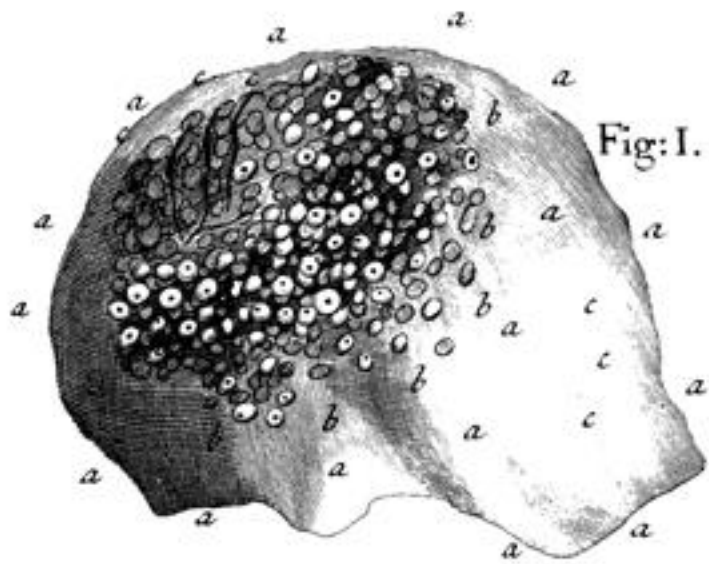


Fig: I.

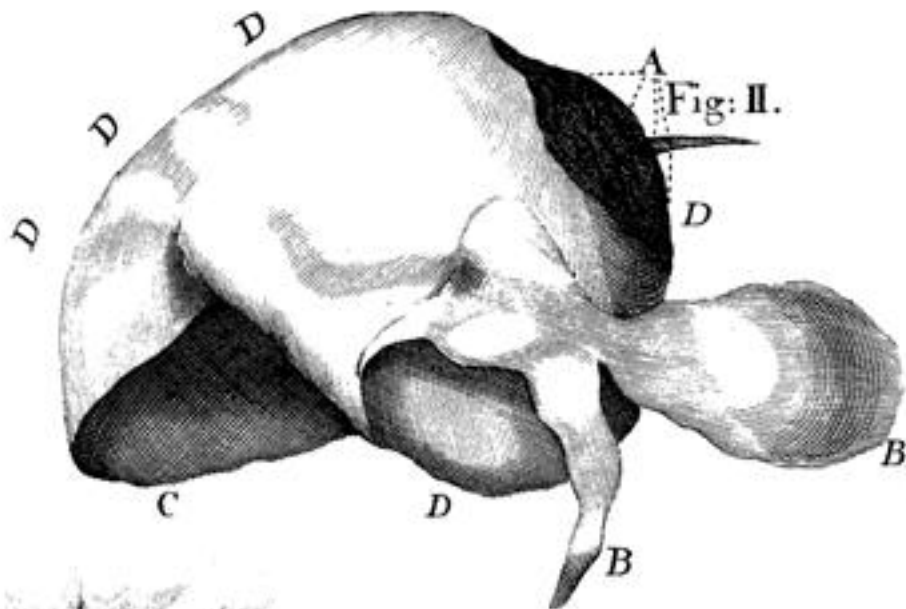


Fig: II.

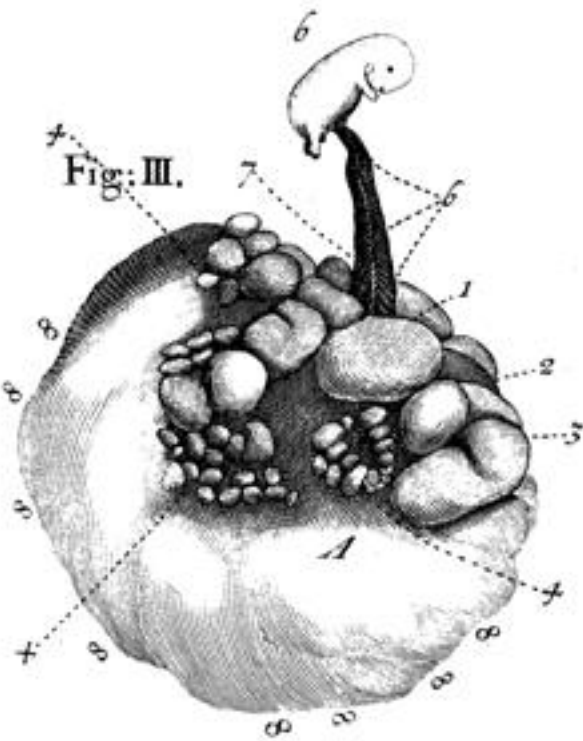


Fig: III.

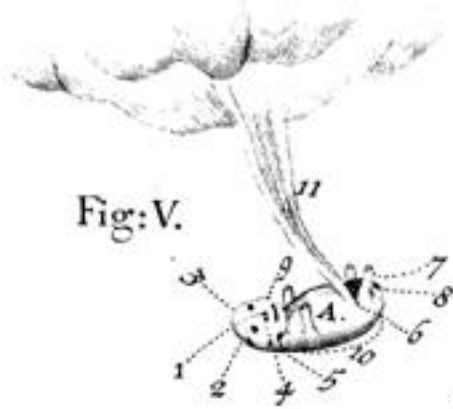


Fig: V.

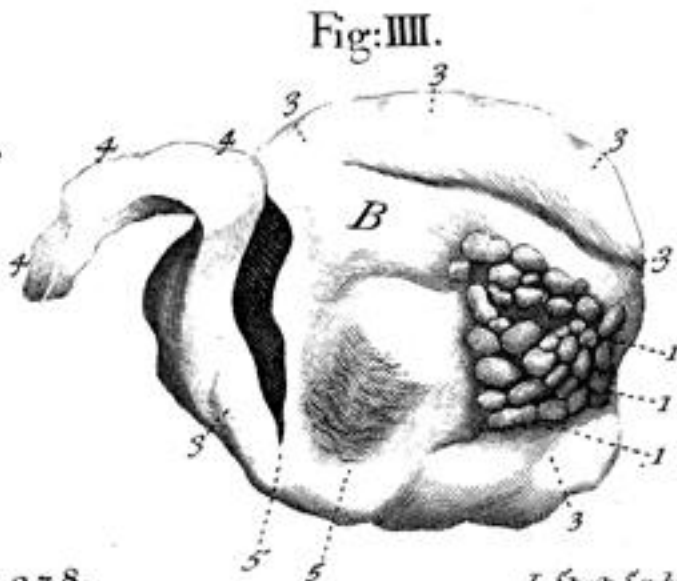


Fig: III.